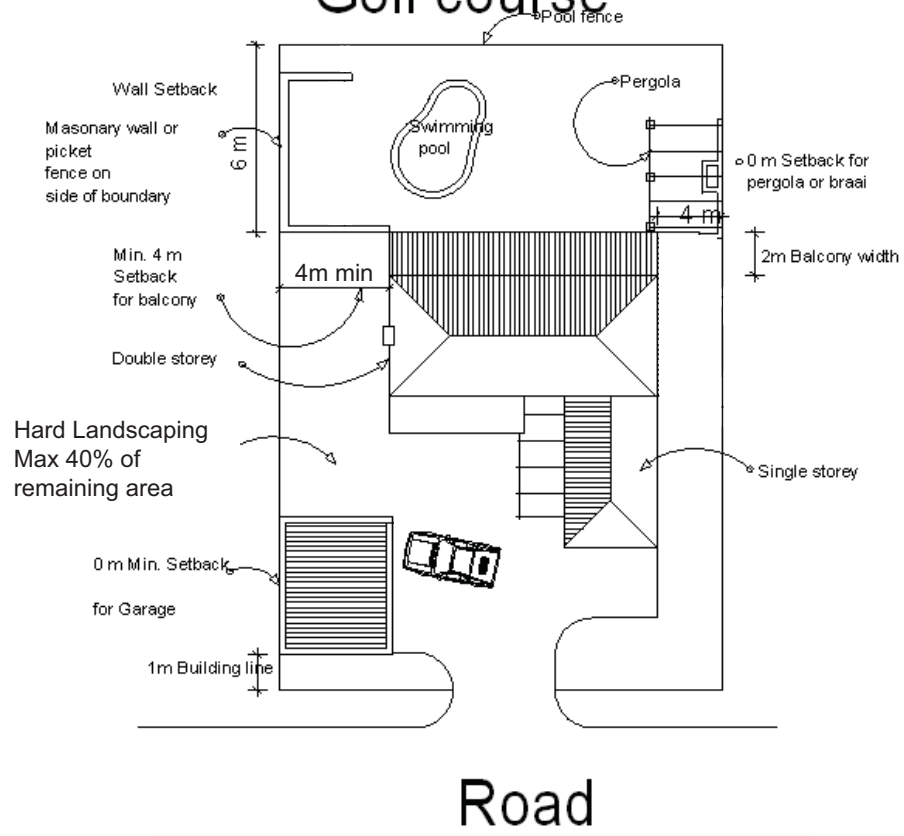


Architectural Guidelines
ANNEXURE C

Sketches

Revision 13: Jan 2010

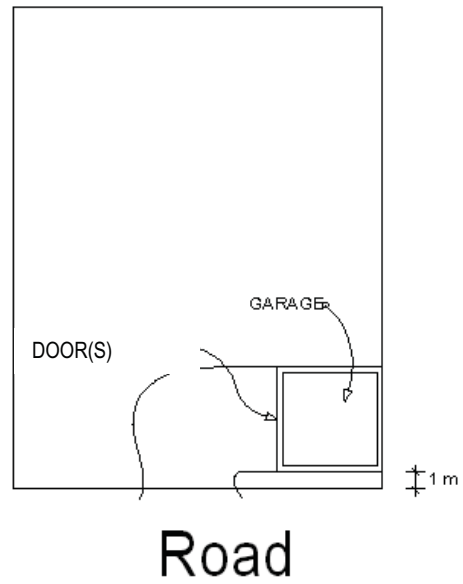
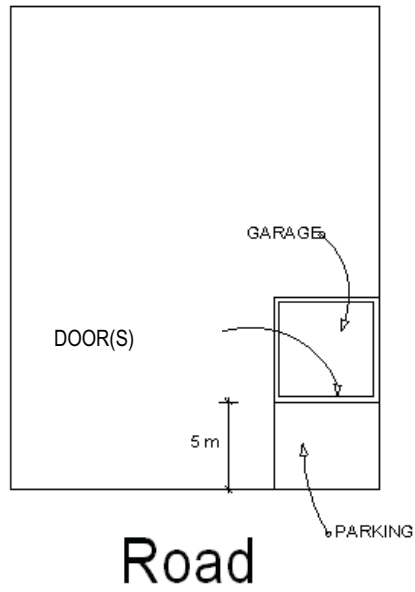
Golf course



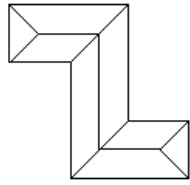
TYPICAL LAYOUT

SKETCH

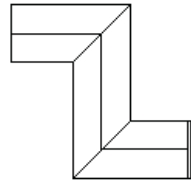
3



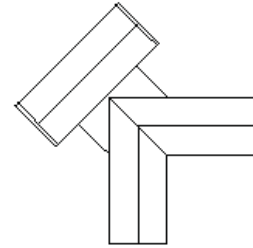
**TYPICAL GARAGE LAYOUT
FOR SINGLE RESIDENTIAL
SITES**



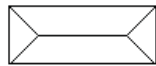
"Z" - SHAPED



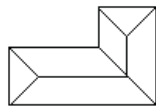
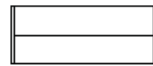
GABLE END POSITIONS



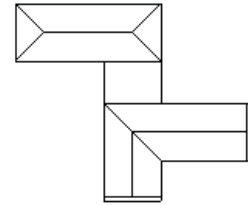
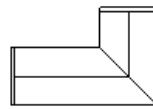
COMPOSITE



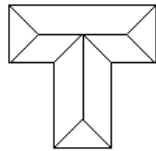
RECTANGULAR



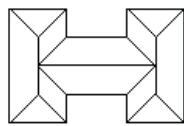
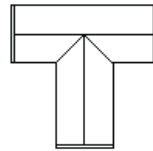
"L" - SHAPED



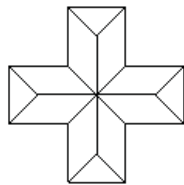
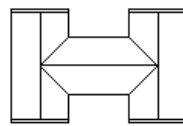
COMPOSITE



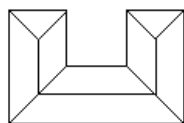
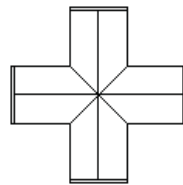
"T" - SHAPED



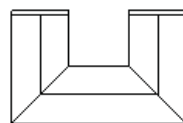
"H" - SHAPED

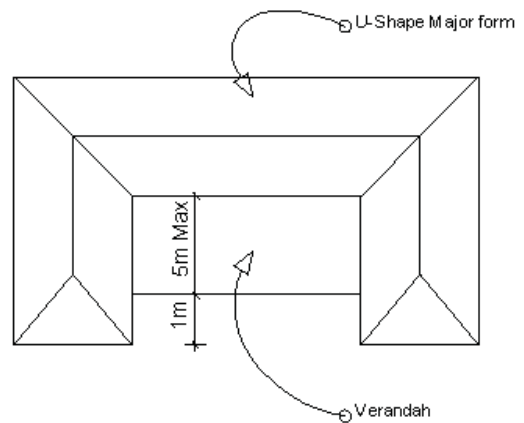
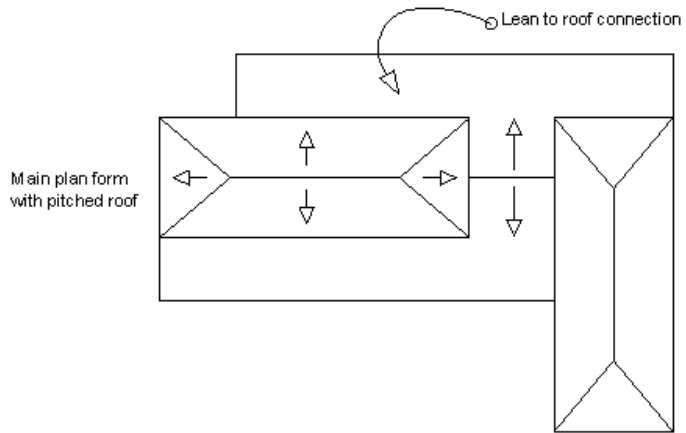
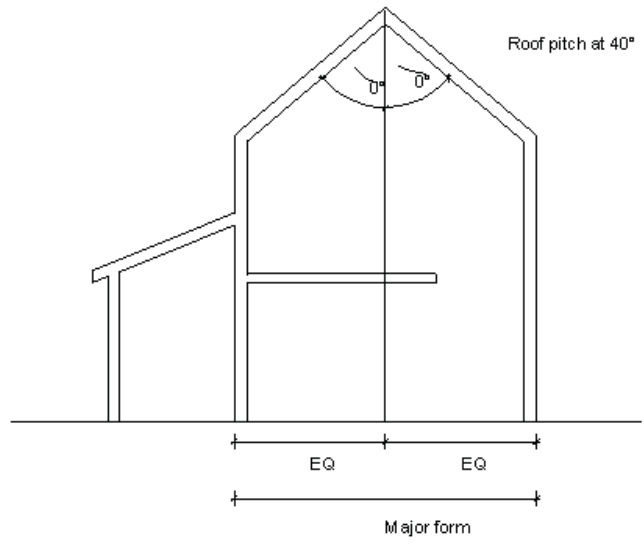


CROSS

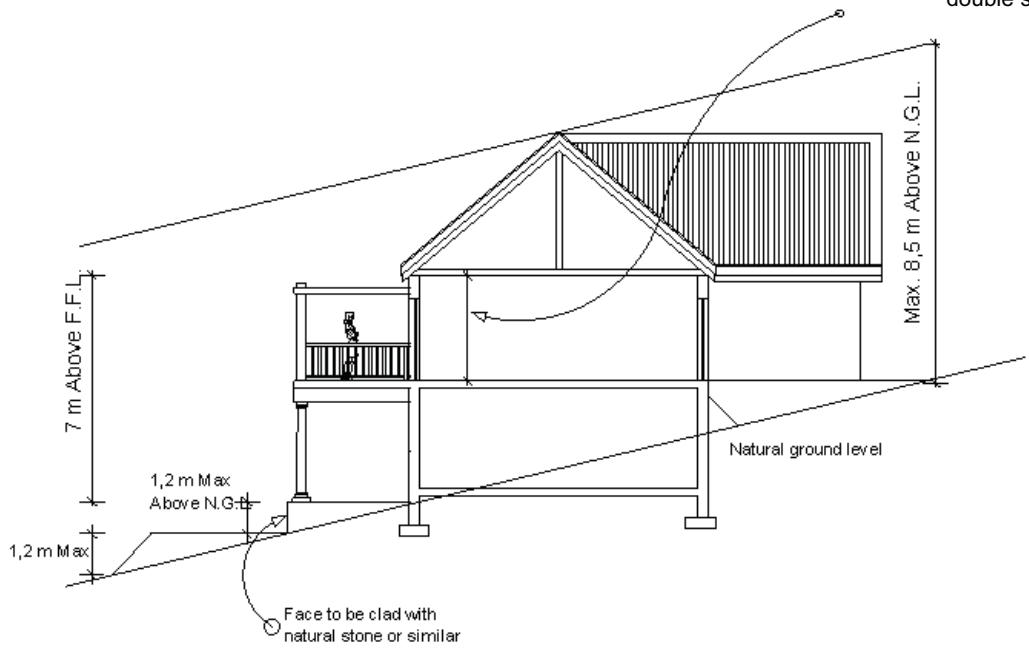


"U" - SHAPED

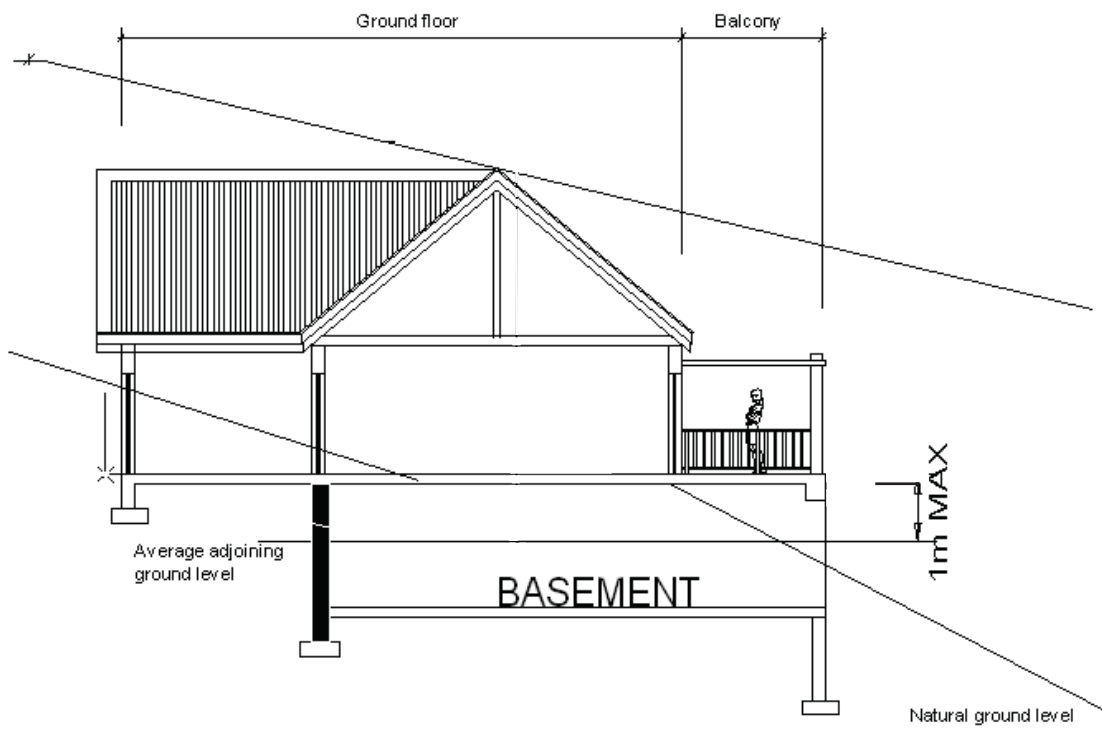




SKETCH

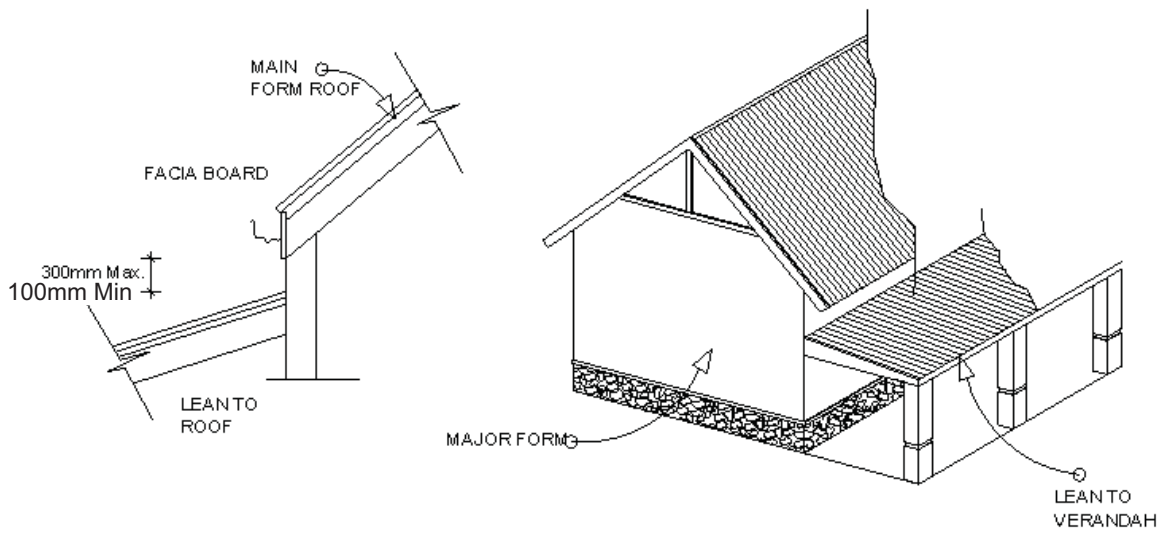
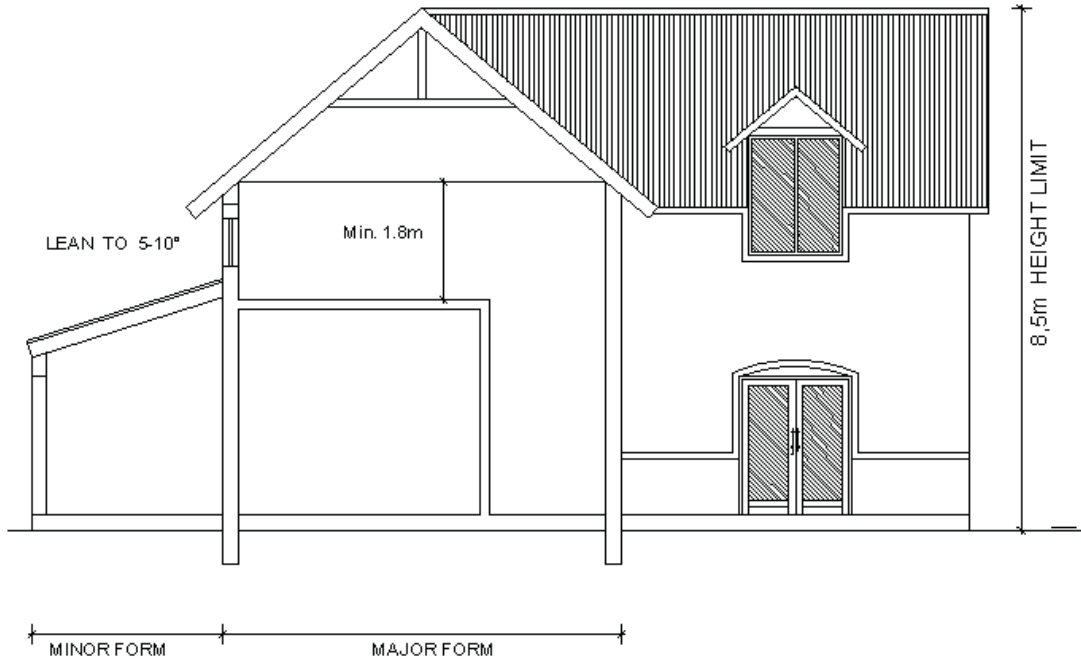


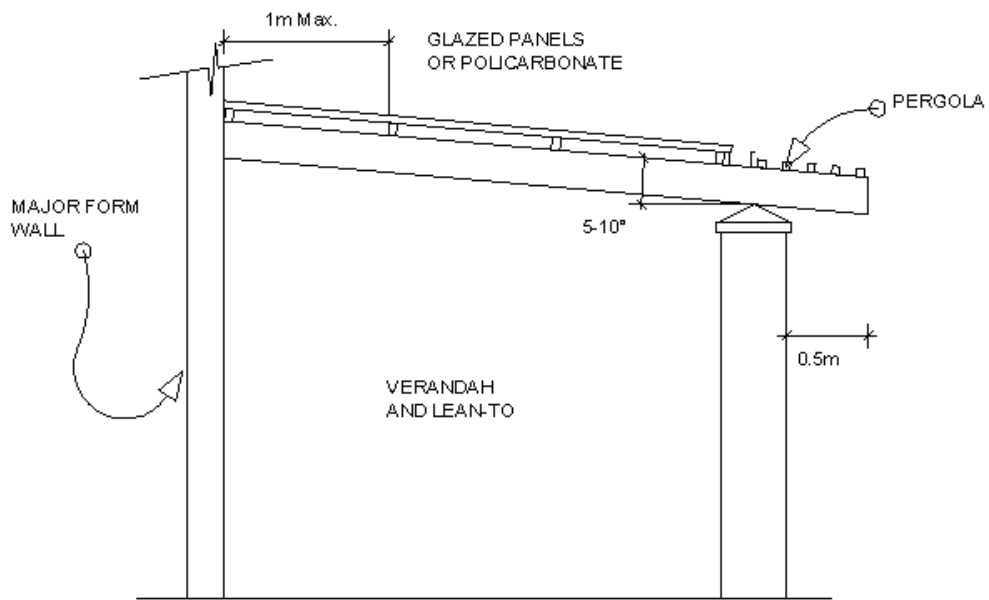
- Less than 1.5m above FFL is a loft.
- Greater than 1.5m above FFL is a double storey.



SKETCH

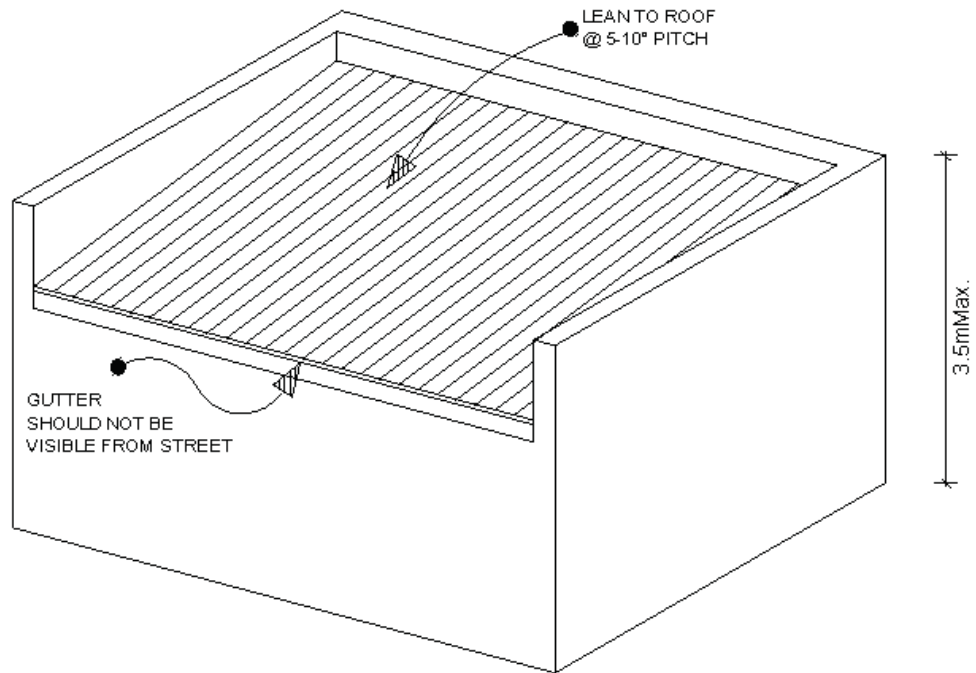
11

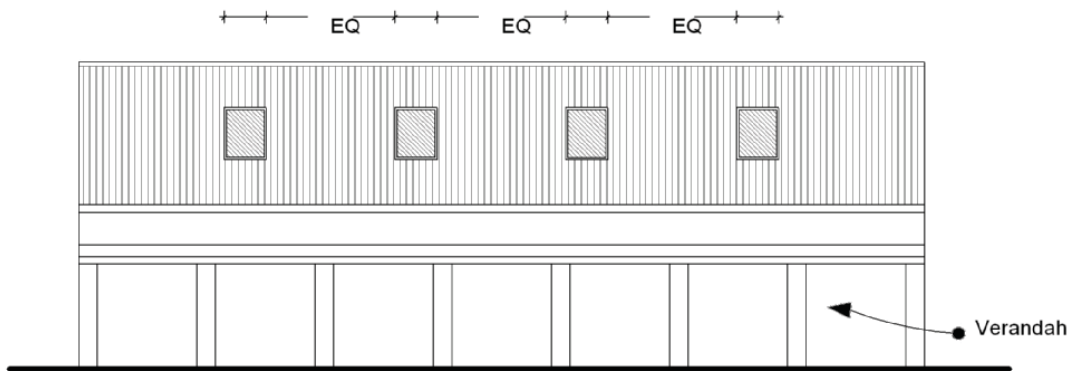
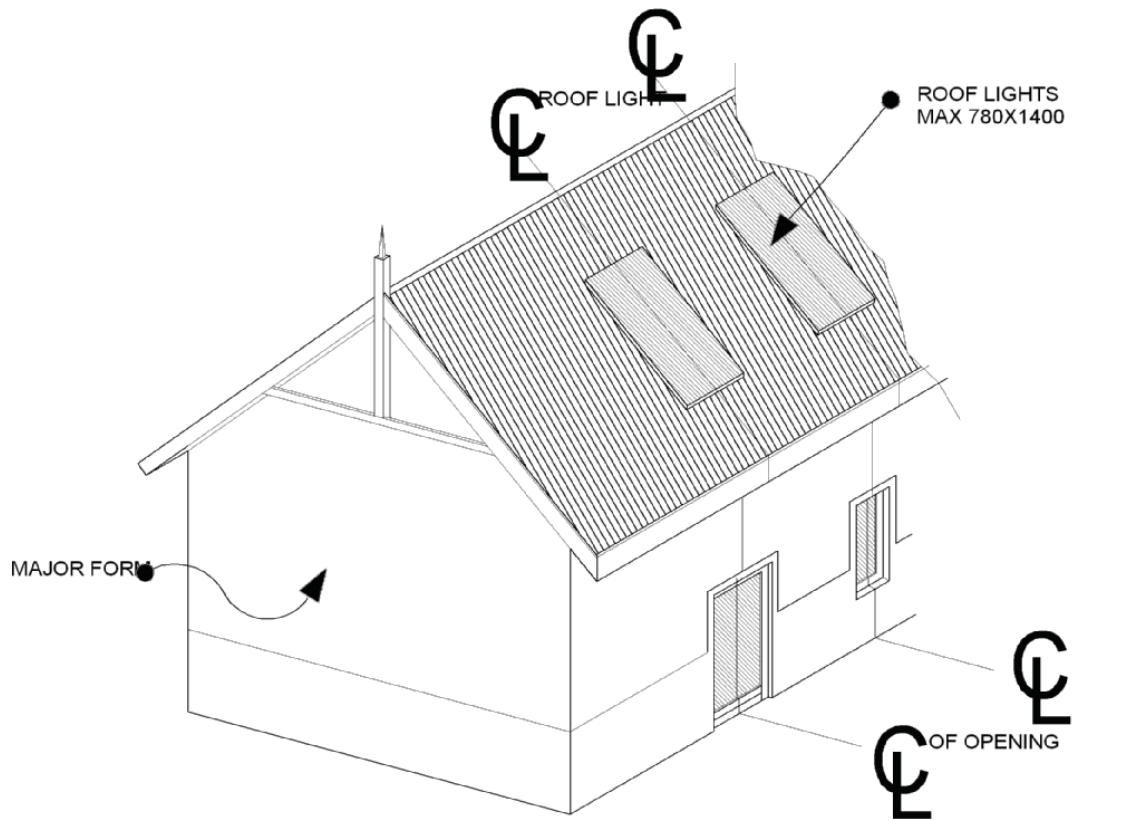




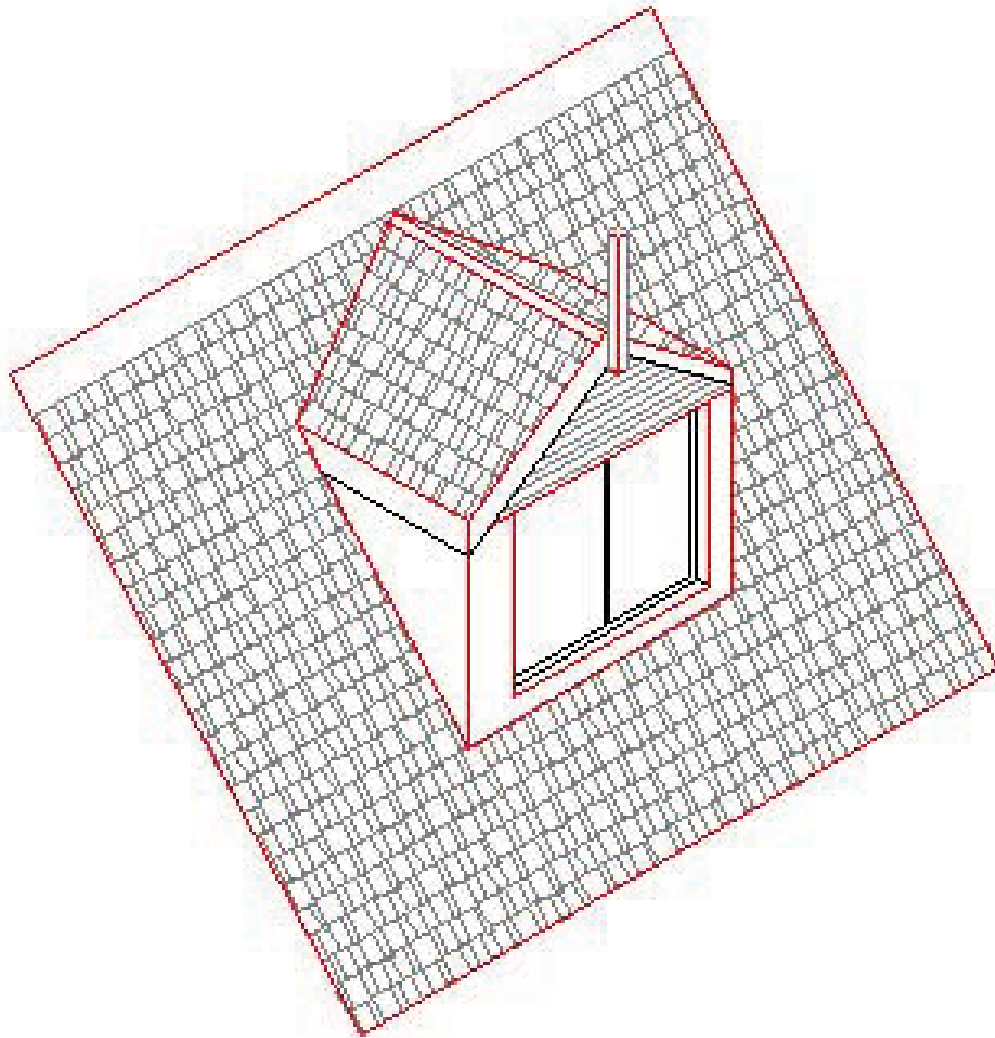
SKETCH

13



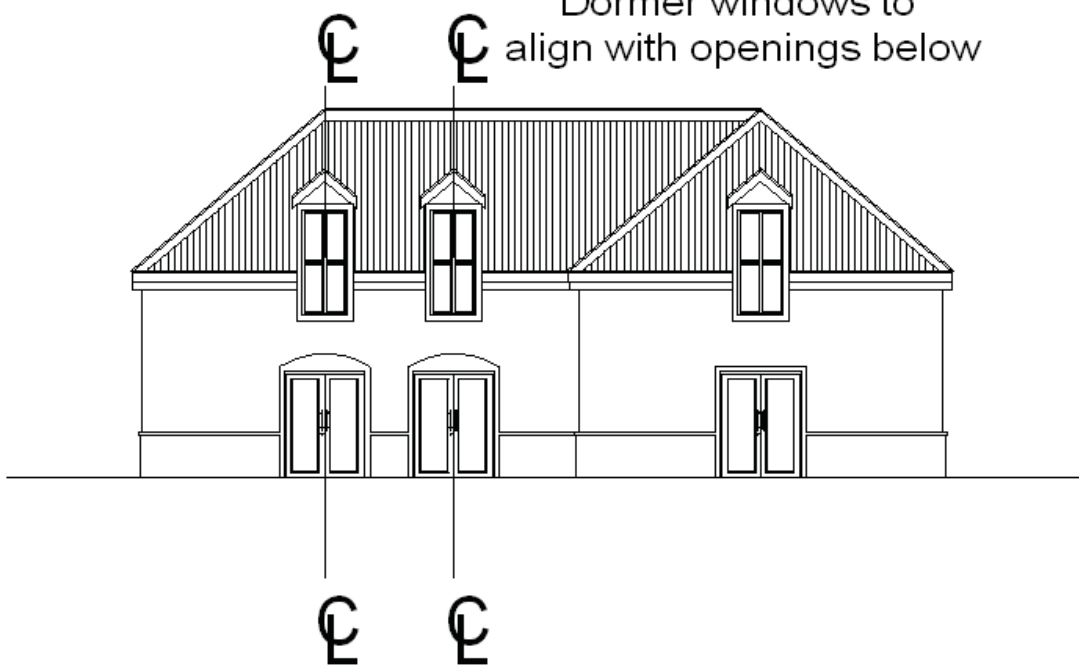


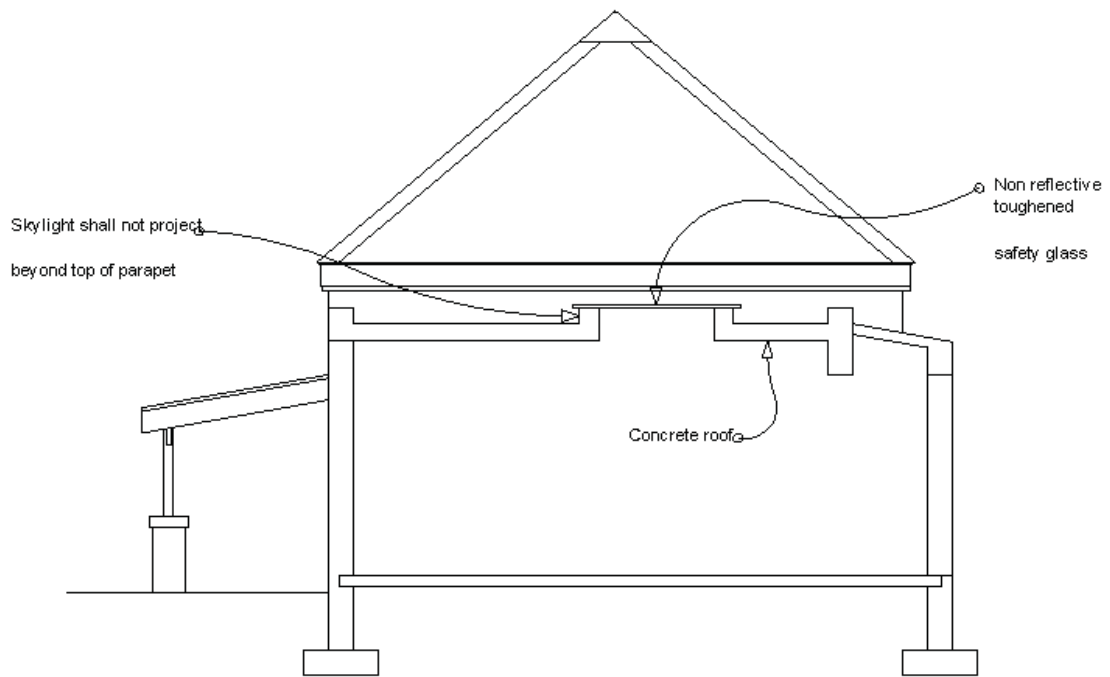
SKETCH (15)



COLONIAL DORMER

Dormer windows to align with openings below

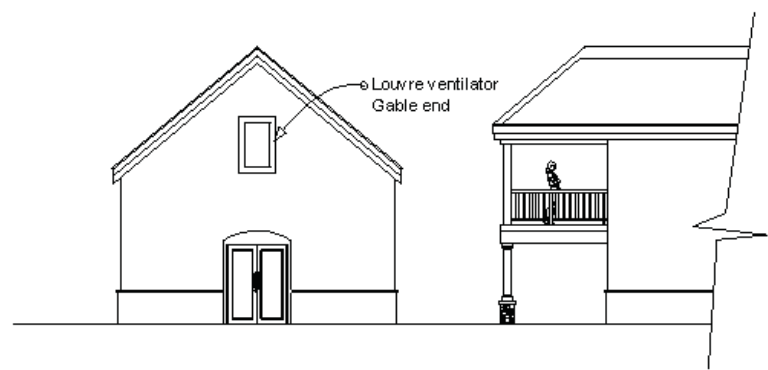
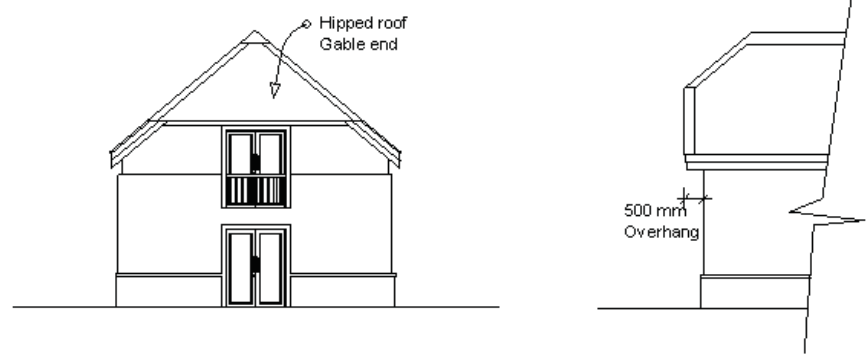
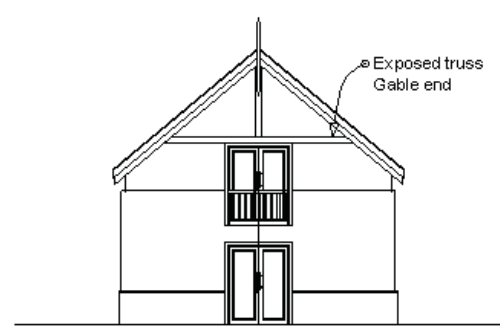
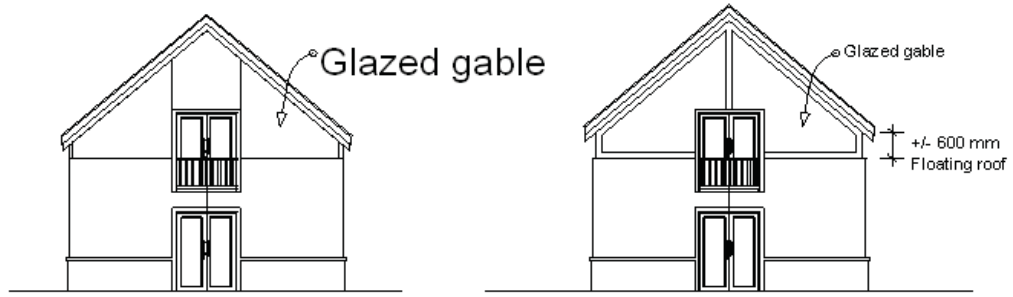


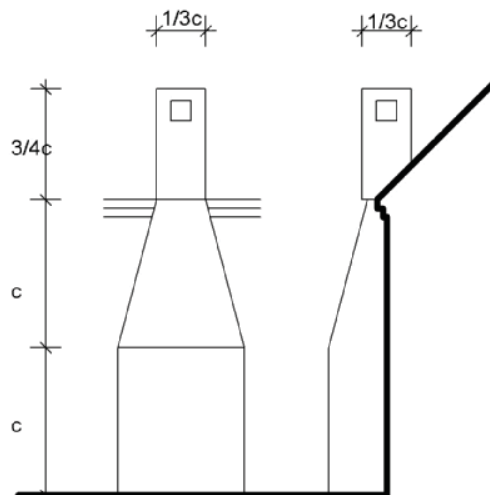
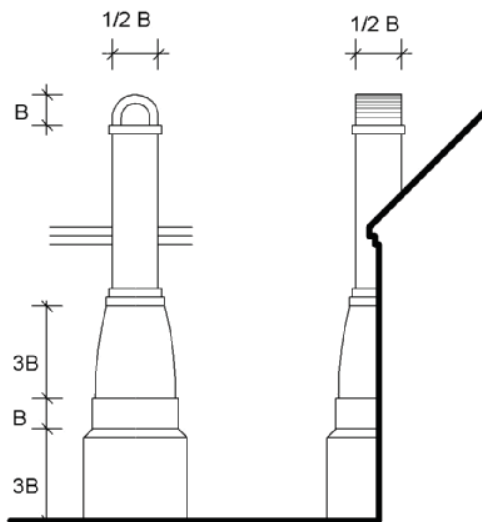
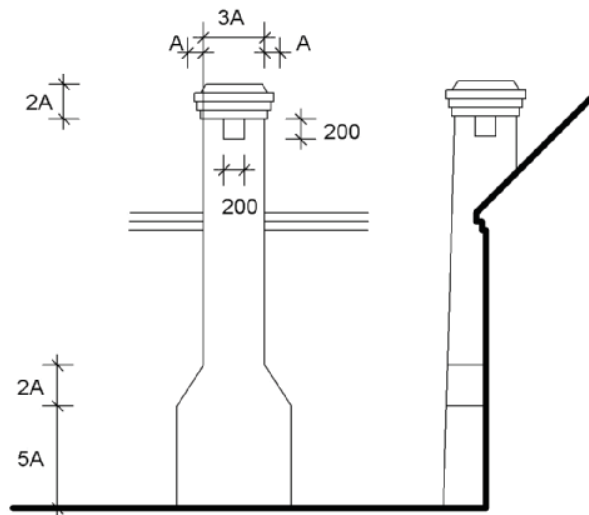


SKYLIGHT

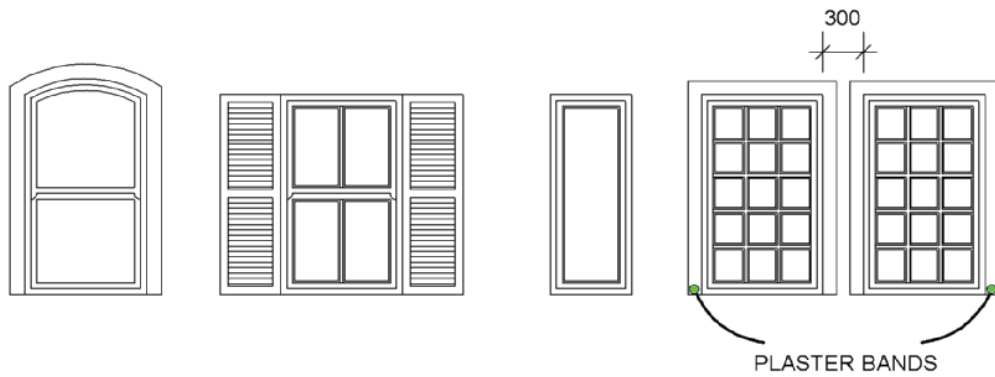
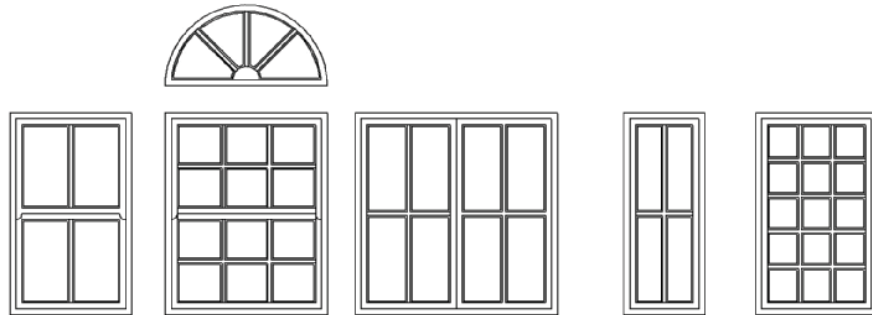
SKETCH

18

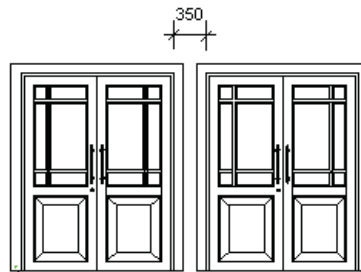
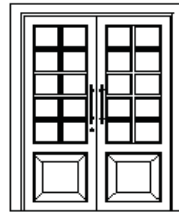
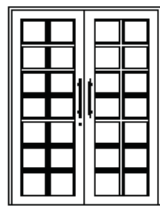
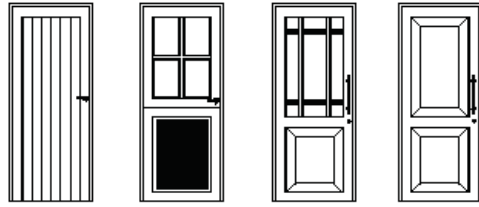




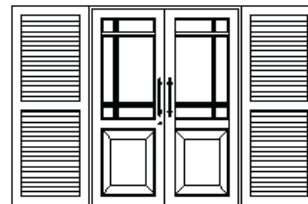
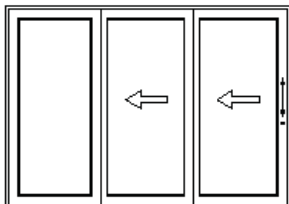
SKETCH (20)



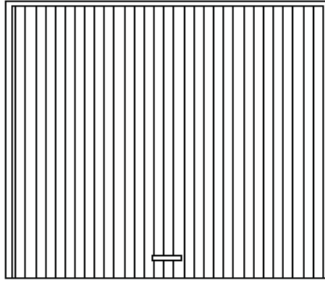
TYPICAL WINDOWS



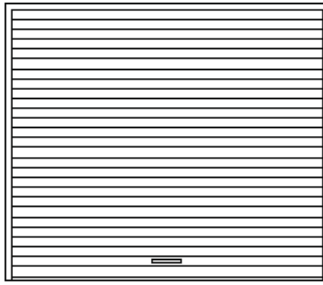
PLASTER BANDS



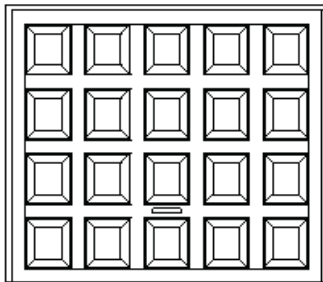
These doors to be used
behind
pergolas and
verandahs



Vertical boarding
(Painted)



Horizontal boarding
(Painted)



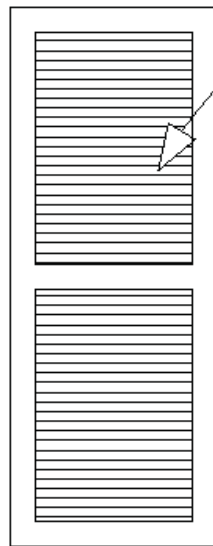
12, 15, 18, and 20
Panelled door

TYPICAL GARAGE DOORS

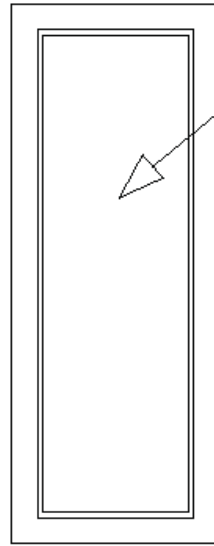
SKETCH

23

Louvered



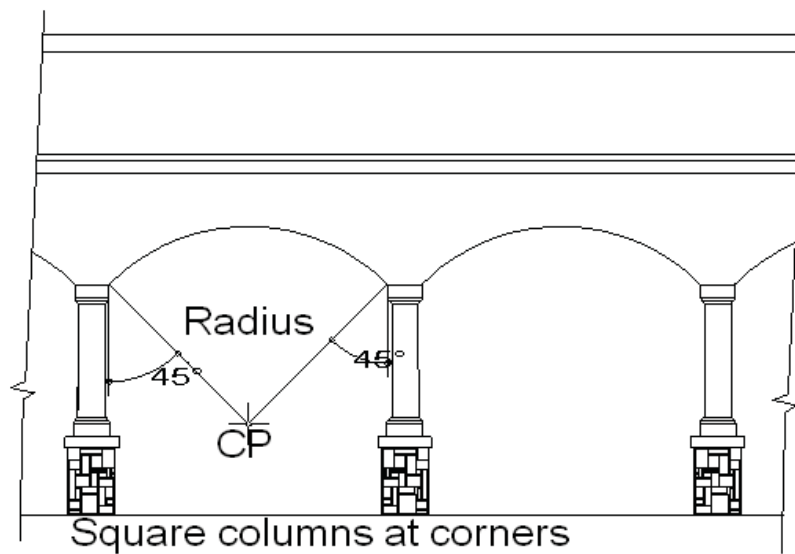
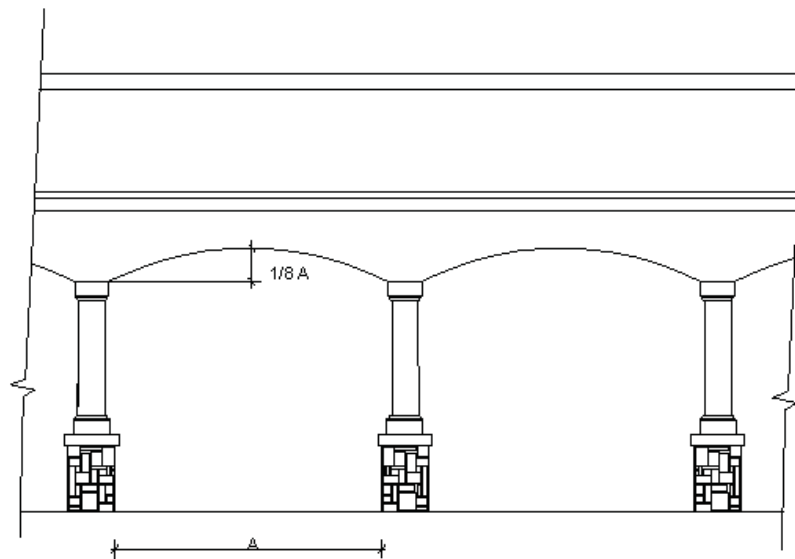
Solid

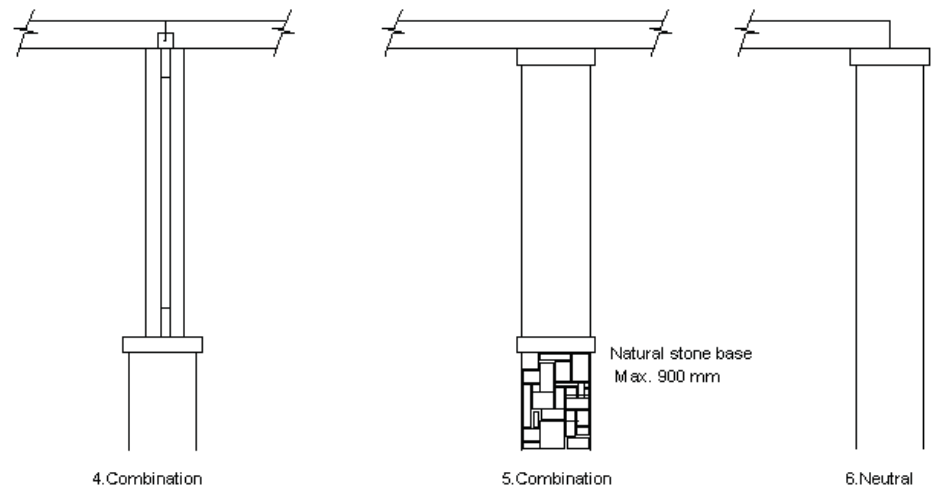
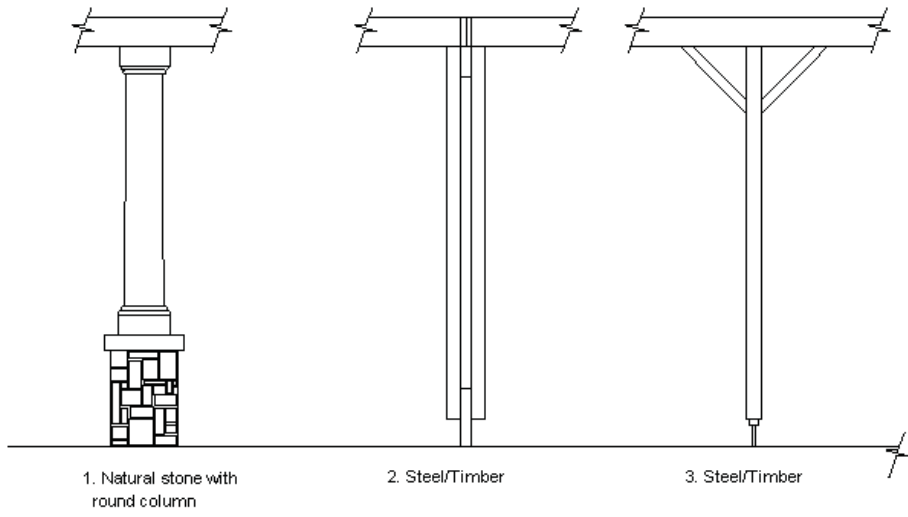


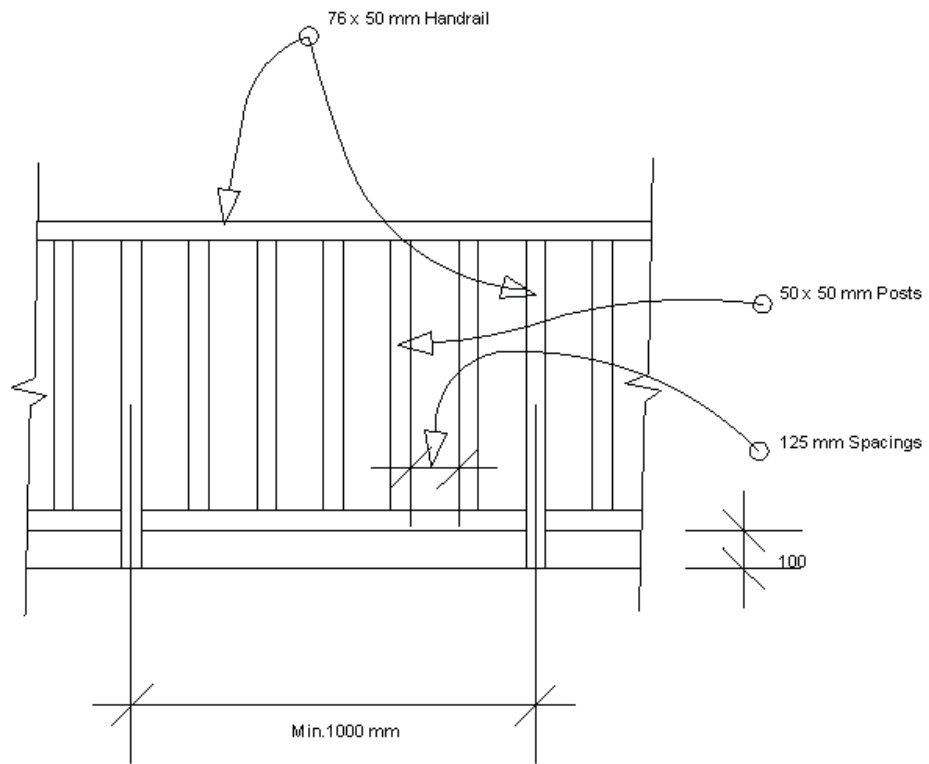
TYPICAL LOUVERS/
SOLID PANEL

SKETCH

24







TYPICAL
BALUSTRADE or
SIMILAR APPROVED

SKETCH

27

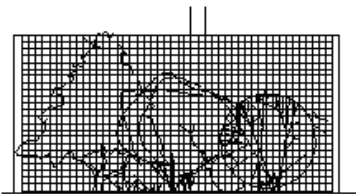
1



PLANT SHRUBS

2a

Rounded tops.
Tanalith poles.



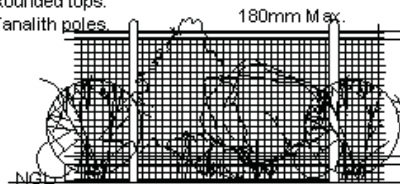
Black
Bekaert
Pantanet
Protect
Mesh

Up to
1200mm

HEDGE or PLANTED FULL HEIGHT

2b

Rounded tops.
Tanalith poles.



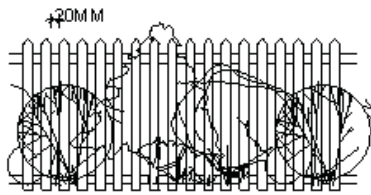
Black
Bekaert
Pantanet
Protect
Mesh

Up to 1800mm

Horizontal Tanalith
Bracing poles.

3

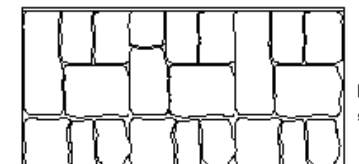
Tanalith treated.



Up to
1800mm

PICKET FENCE

4



Natural
stone

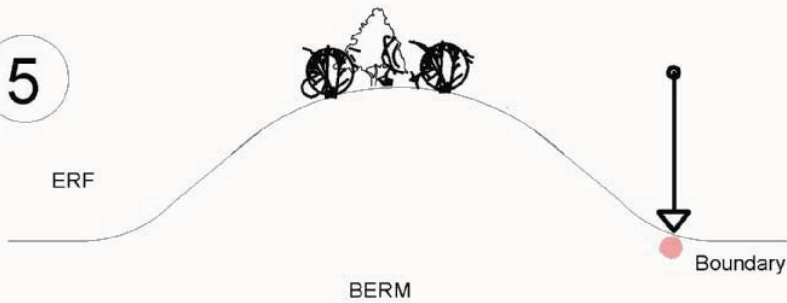
Up to
1800mm

20MM NATURAL STONE

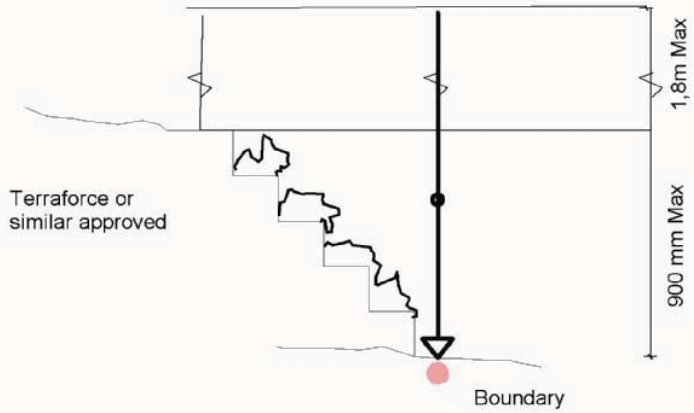
SKETCH

29a

5

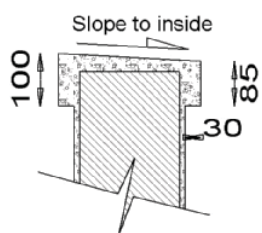


6

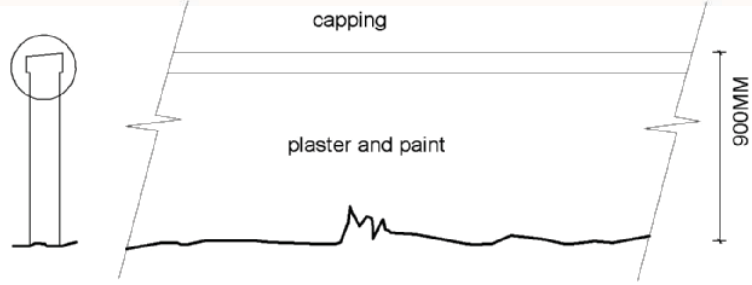


7

SOLID MASONRY WALLS

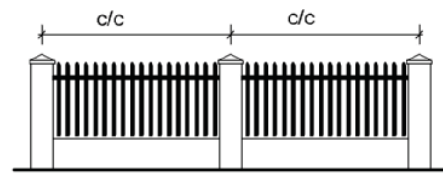


Capping detail

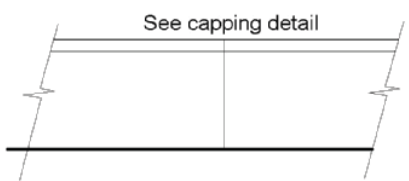


8a

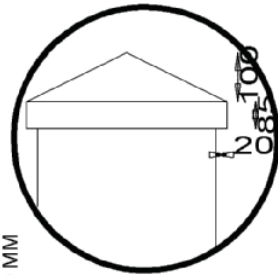
Spacing of piers @ 3m Min c/c & 6m Max. c/c



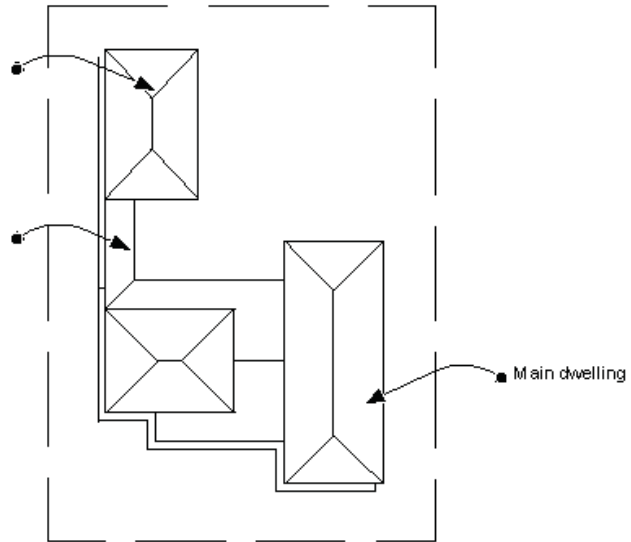
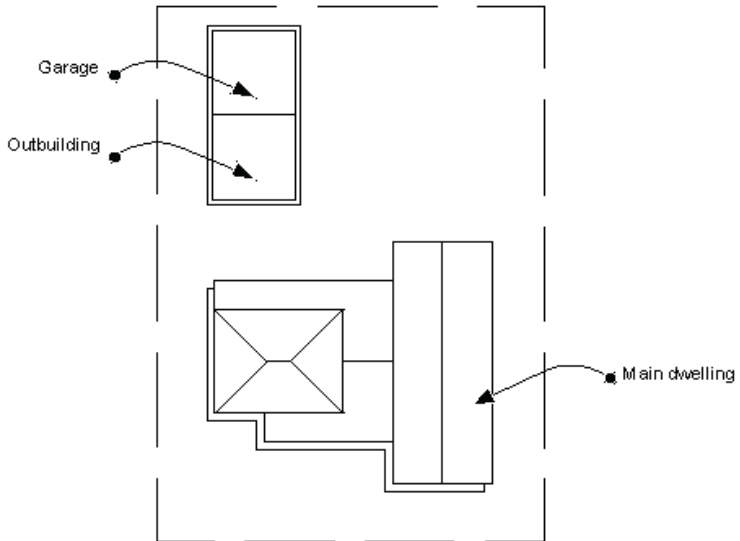
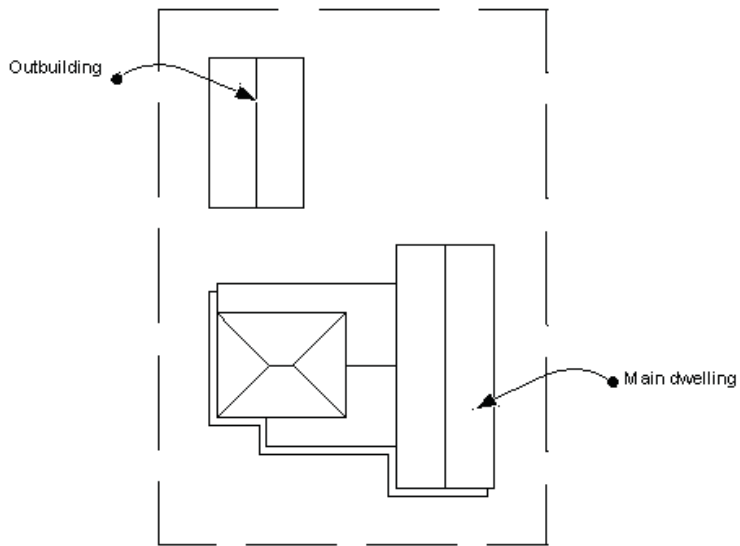
8b



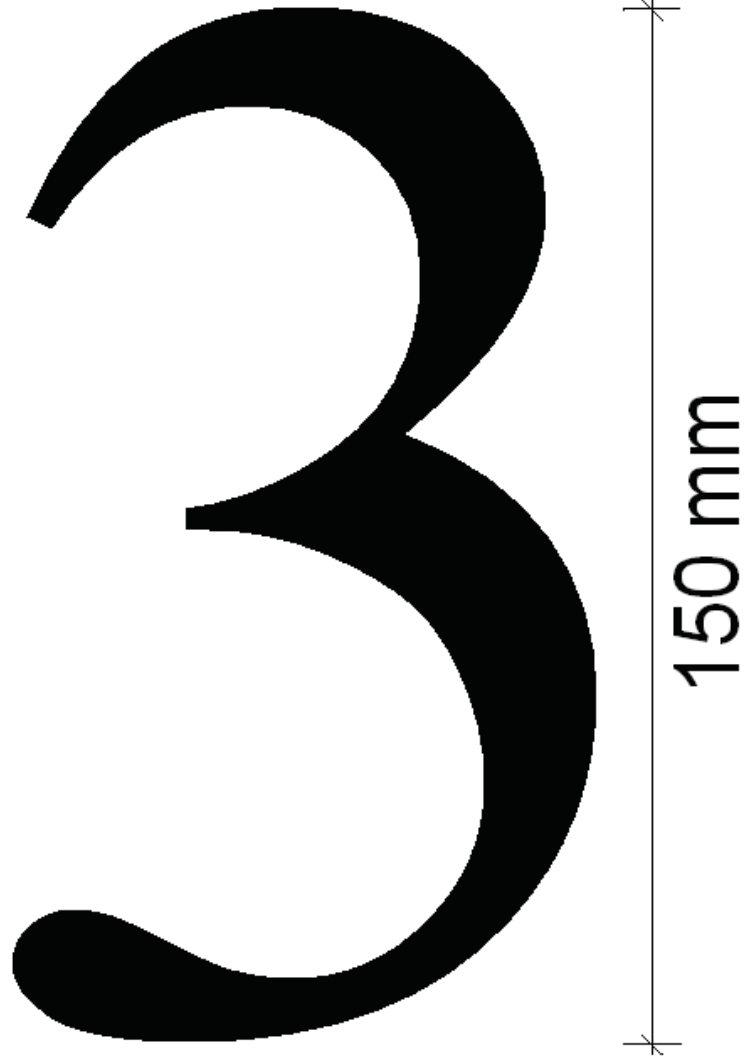
Maximum panel length of 15 m on street boundary



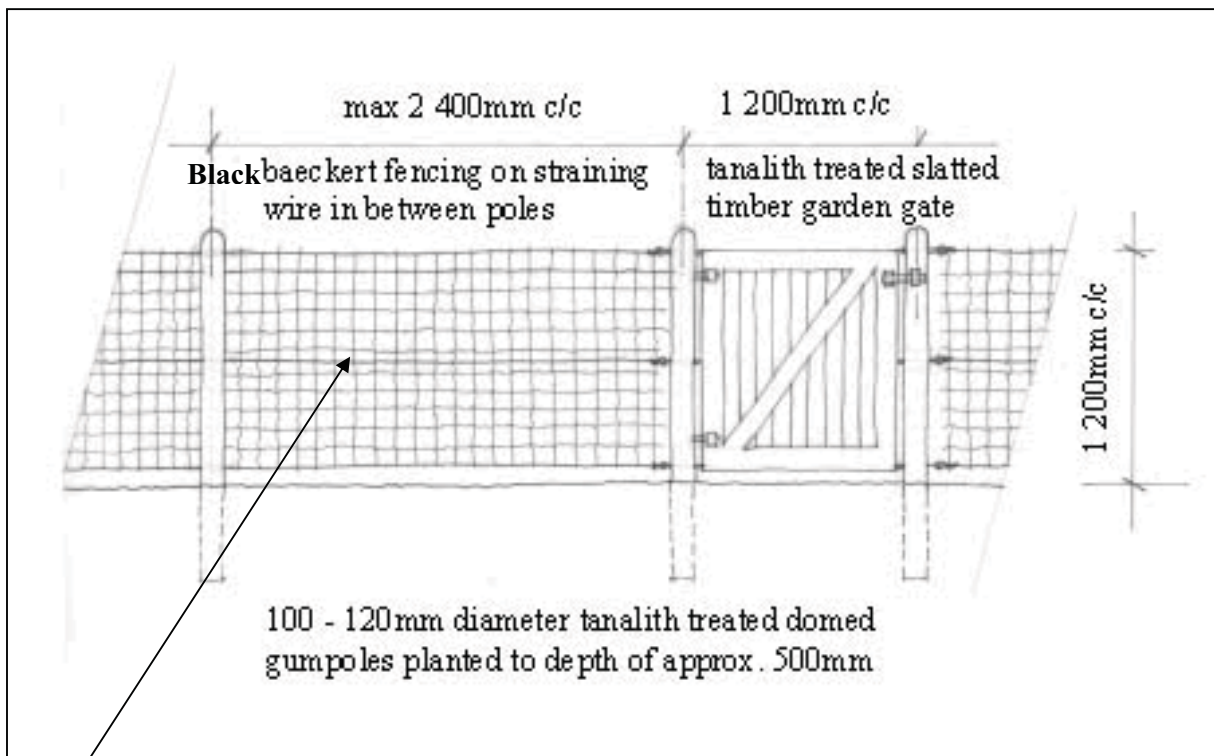
SKETCH 29b



Brass, Nickel or Stainless Steel
Font: Optima or Similar
No ornate or decorative fonts



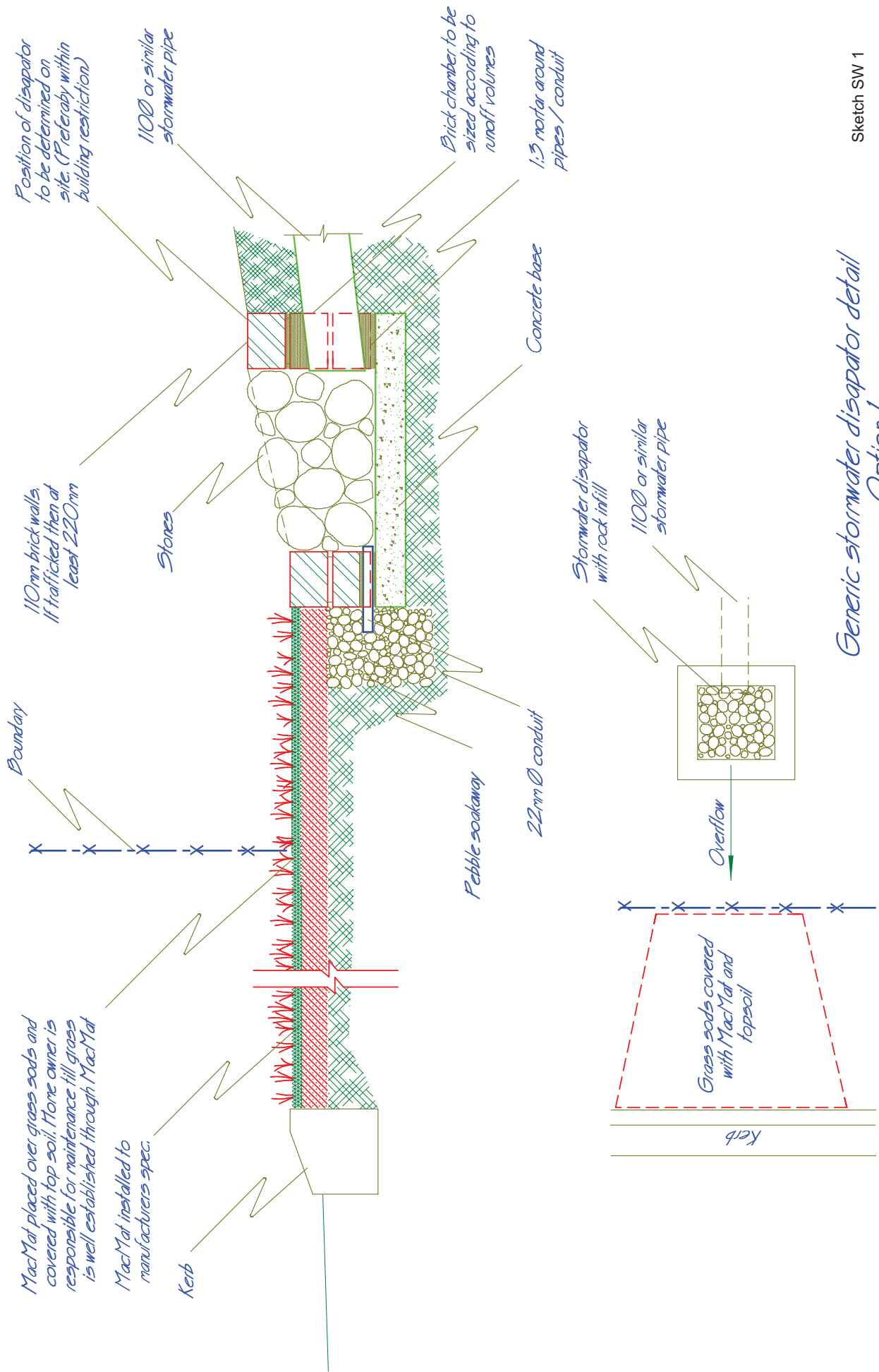
GOLF COURSE BOUNDARY FENCE

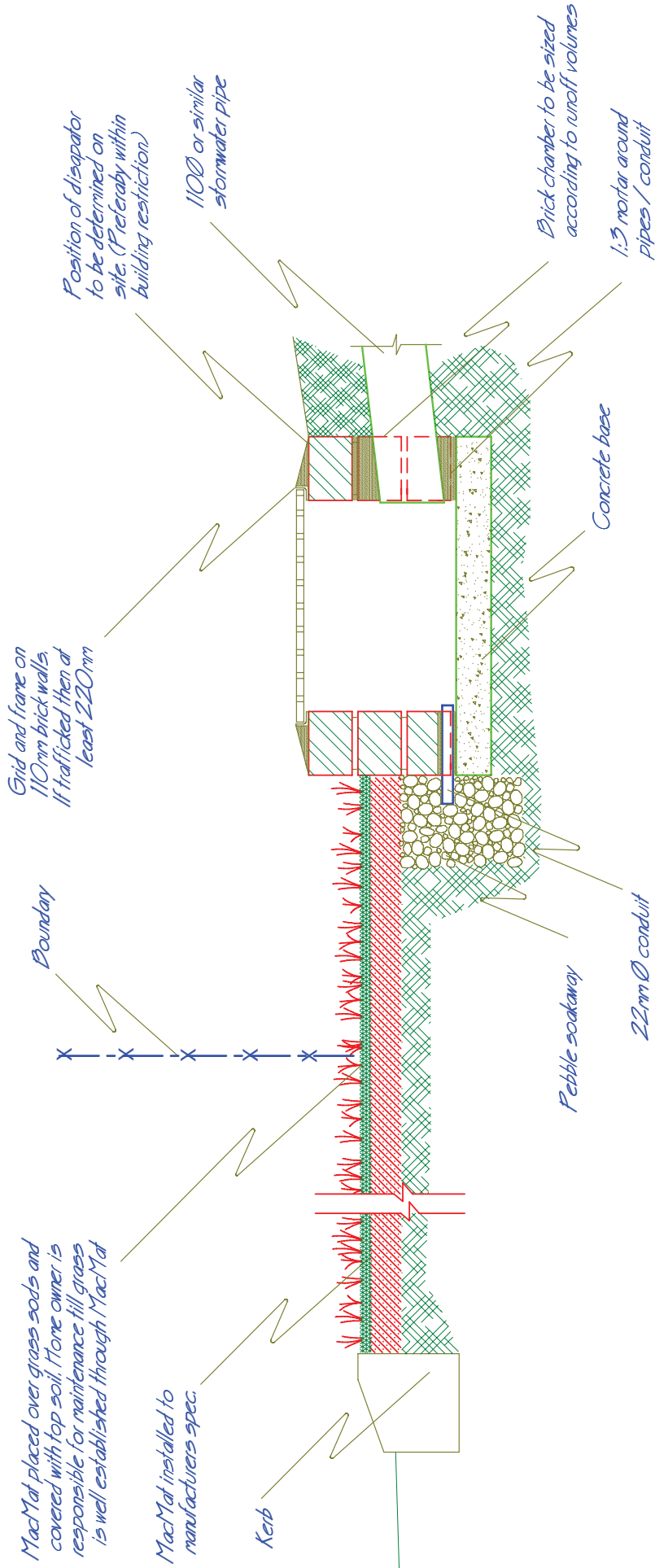


Black Bekaert Pantanet Protect Mesh available from BETA BASTION (Pty) Ltd on 021 905 4535 (Reference: Kingswood Golf Estate)

SKETCH

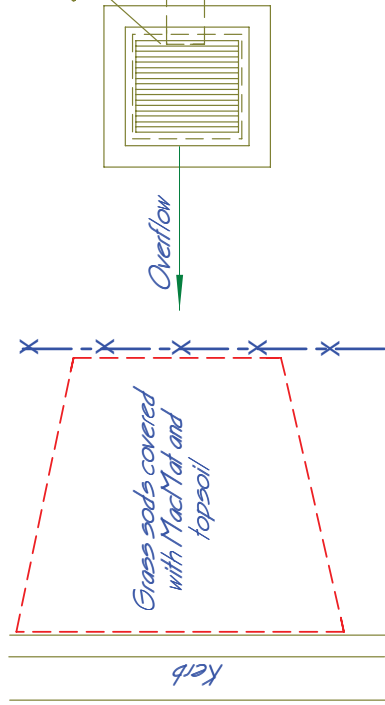
32



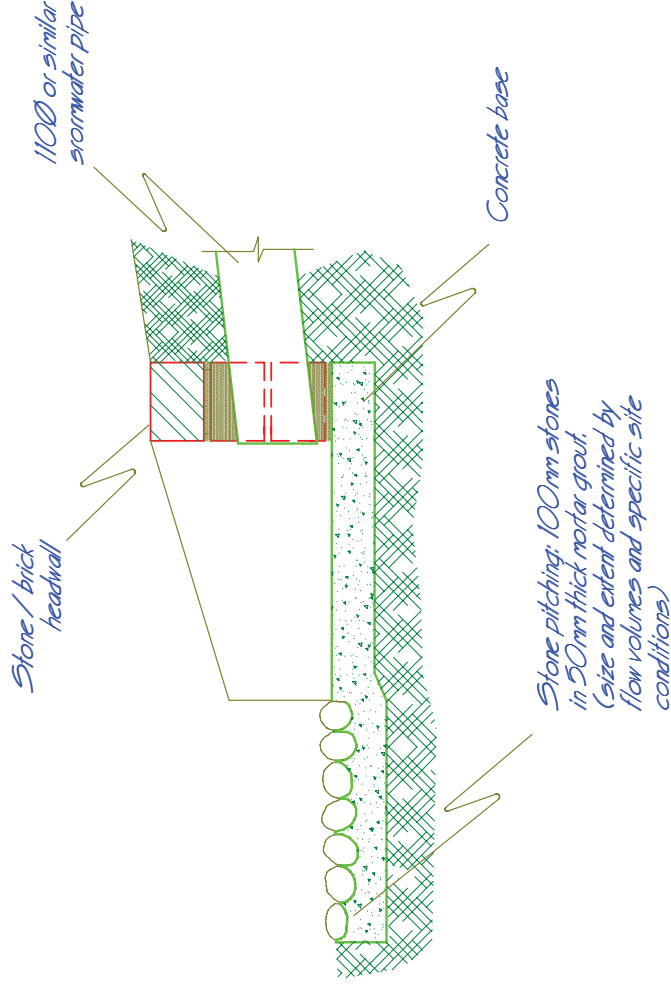
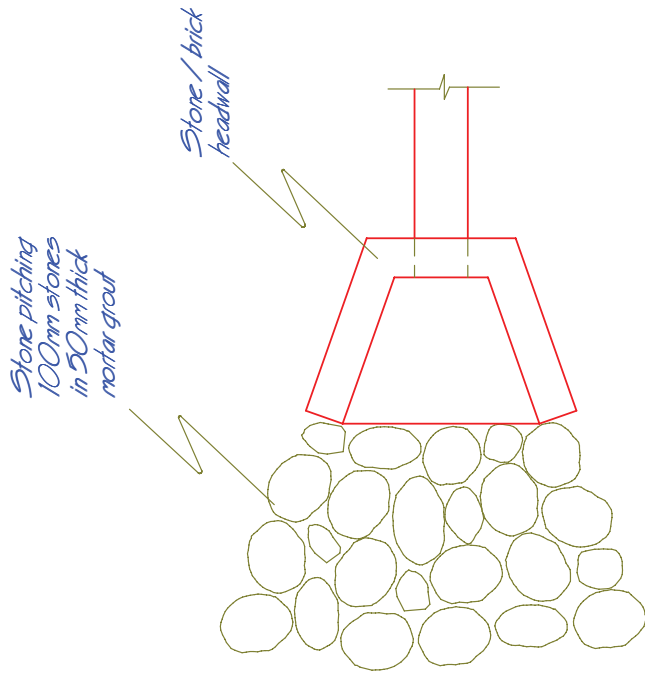


Stormwater disipator with grid and frame

110 or similar stormwater pipe



Generic stormwater disipator detail
Option 2



*Generic stormwater outlet detail
Option 3*

(only to be used for low volumes if water can be returned to sheetflow before property boundary.)